

## How to access your GFM system from your iPhone, iPod touch or iPad.

The following describes how to set up a Wireless Ethernet router, necessary for the WiFi connection between the GFM CPU and your iDevice.

We will also download; install and configure the free VNC Server on the GFM CPU.

Your iDevice must have a VNC Viewer, in this example we will use the Jaadu VNC viewer. The Jaadu VNC viewer must be purchased from Apples AppStore, so you must have or create an Itunes account, this will not be covered in this example.

### **Note; this is only applicable to GFM systems equipped with a Dell CPU.**

If you got an Advantech CPU/touch screen, please contact us for a quote for upgrading your system.

First we will set up the Wireless router at your GFM system.  
In this example we use a D-Link DIR-600.

Since the DIR-600 can act as an Internet router, we will configure it manually, and not use the enclosed CD. We recommend to **not** connecting it to internet unless you are aware of the consequences.

Close the GFM application.

The screenshot shows the D-Link DIR-600 web interface. At the top, it displays 'Product Page : DIR-600' and 'Hardware Version : B1 Firmware Version : 2.01'. The main header features the D-Link logo. Below the header is a navigation menu with tabs for 'DIR-600', 'SETUP', 'ADVANCED', 'MAINTENANCE', 'STATUS', and 'HELP'. The 'SETUP' tab is selected, and the 'Wireless Setup' option in the left sidebar is circled in red. The main content area is titled 'WIRELESS CONNECTION' and contains the following text: 'There are 2 ways to setup your wireless connection. You can use the Wireless Connection Setup Wizard or you can manually configure the connection.' Below this is a note: 'Please note that changes made in this section will also need to be duplicated on your wireless clients and PCs.' The 'WIRELESS CONNECTION SETUP WIZARD' section includes a button labeled 'Wireless Connection Setup Wizard' and a note: 'Note: Before launching the wizard, please make sure you have followed all steps outlined in the Quick Installation Guide included in the package.' The 'MANUAL WIRELESS CONNECTION OPTIONS' section includes a button labeled 'Manual Wireless Connection Setup', which is also circled in red. A 'Helpful Hints..' sidebar on the right provides additional guidance.

Connect DIR-600 to the GFM CPU according to the manual, and log in as described.

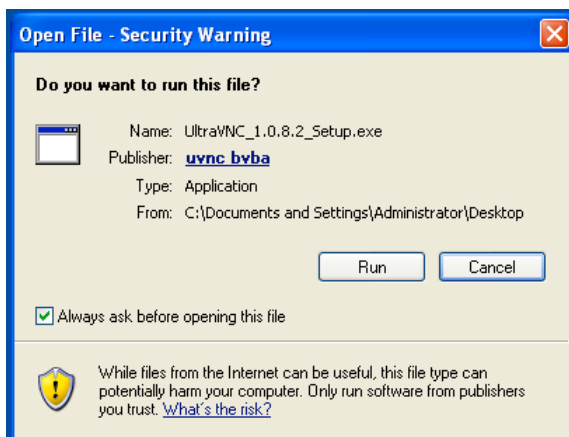
Choose Wireless Setup from the menu. Then click Manual Wireless Connection Setup.

The screenshot shows a router's configuration page with several sections:

- WI-FI PROTECTED SETUP (ALSO CALLED WPA 2.0 IN WINDOWS VISTA)**: The 'Enable' checkbox is checked. The 'Current PIN' is 58627648. Buttons for 'Generate New PIN', 'Reset PIN to Default', 'Reset to Unconfigured', and 'Add Wireless Device with WPS' are visible.
- WIRELESS NETWORK SETTINGS**: 'Enable Wireless' is checked and set to 'Always'. 'Wireless Network Name' is 'GFM'. 'Enable Auto Channel Selection' is checked. 'Wireless Channel' is '6'. 'Transmission Rate' is 'Best (automatic)'. 'WMM Enable' is checked. 'Enable Hidden Wireless' is unchecked.
- WIRELESS SECURITY MODE**: 'Security Mode' is set to 'Enable WPA/WPA2 Wireless Security (enhanced)'.
- WPA/WPA2**: 'Cipher Type' is 'AUTO(TKIP/AES)'. 'PSK / EAP' is 'PSK'. 'Network Key' is 'gfmssystem'.

Buttons for 'Save Settings' and 'Don't Save Settings' are at the bottom. A 'More...' link is on the right side of the page.

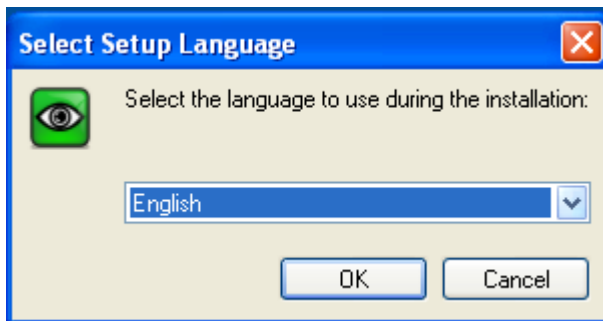
Configure as seen above, and click Save Settings.



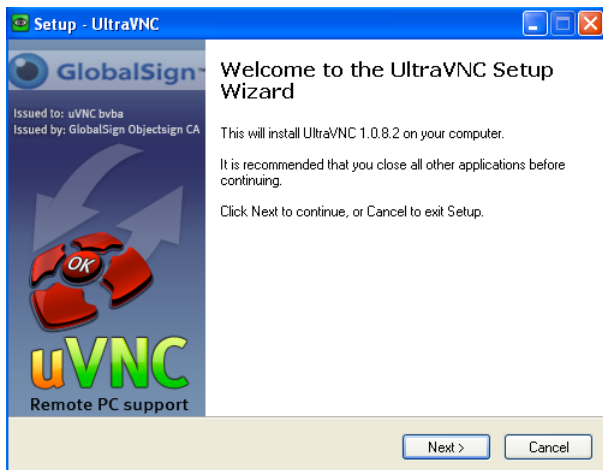
Now we are done with the setup of the router, just connect the Serial Server's Ethernet cable to the router, and launch the GFM Viewer.

Next step will be to download the UltraVNC, on a computer with Internet access, go to [www.uvnc.com/download](http://www.uvnc.com/download), and download UltraVNC. This example describes the procedure for version 1.0.8.

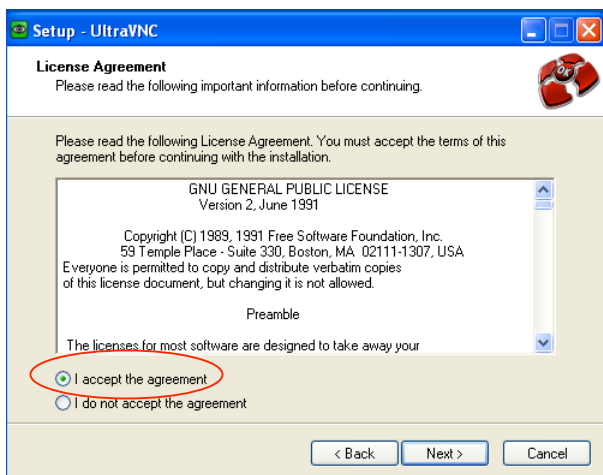
If the above step was not done on the GFM CPU, you need to transfer the downloaded file to the GFM CPU, use a USB thumb drive or any media of your choice. Once the downloaded file has been transferred to the GFM CPU, double click on the file. Then click Run in the above screen.



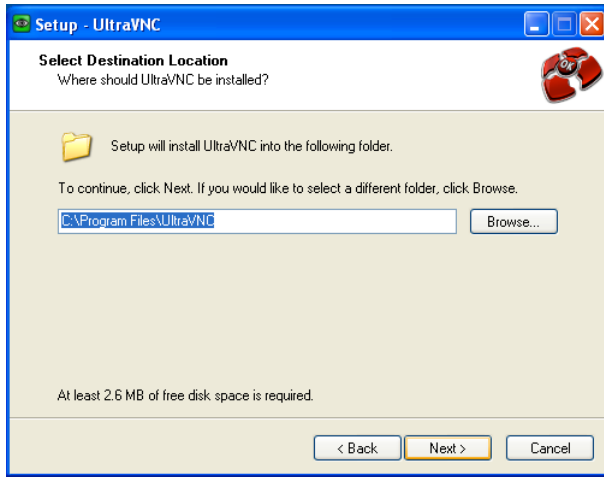
Select desired language and click OK.



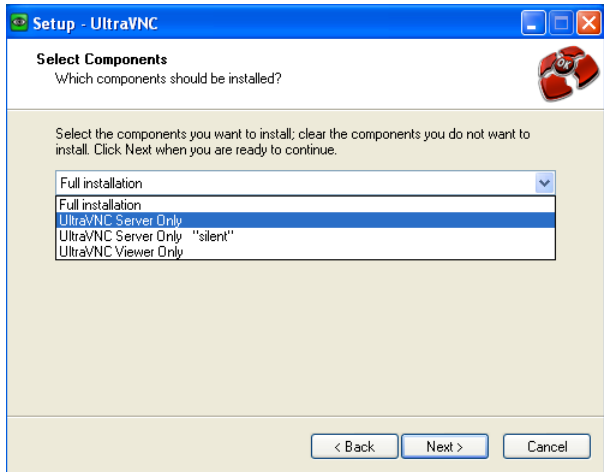
Click Next.



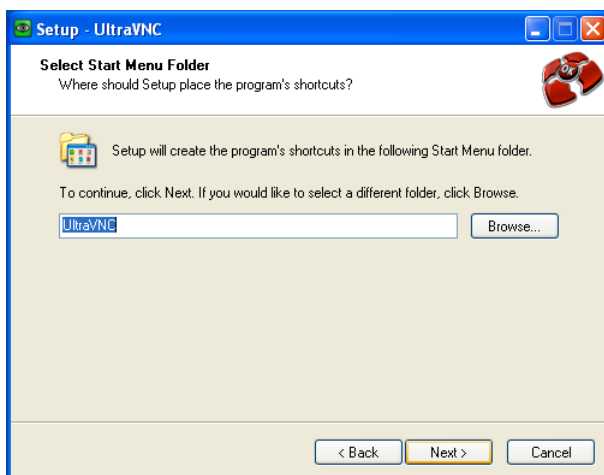
Accept the agreement and click Next.



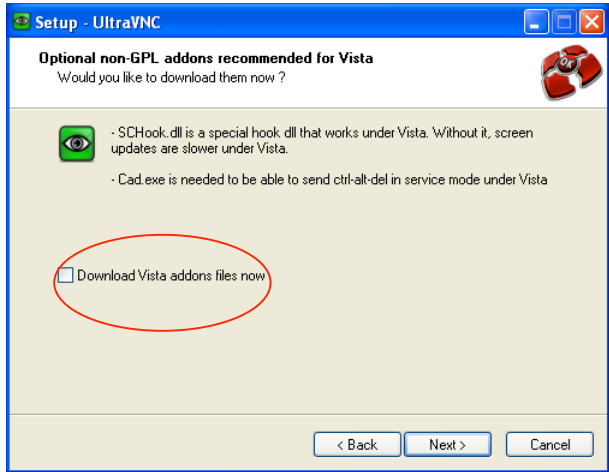
Click Next.



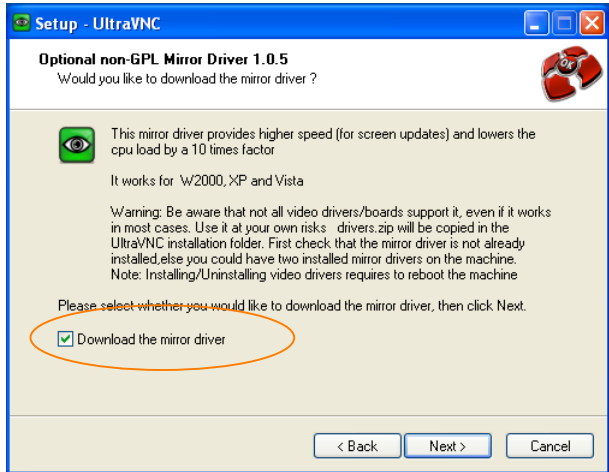
Select UltraVNC Server Only and click Next.



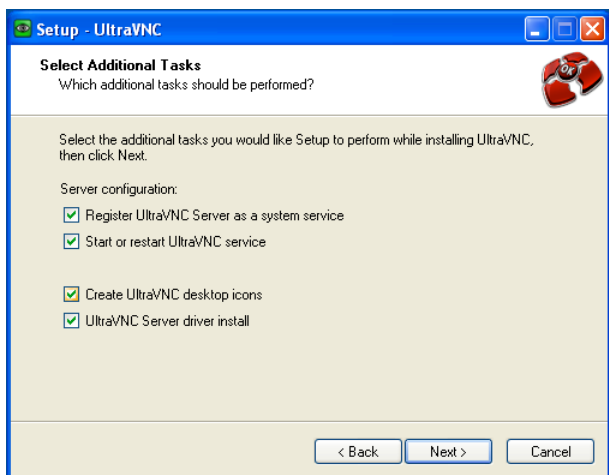
Click Next.



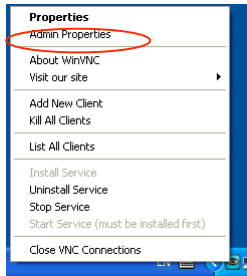
Make sure box is not ticked and click Next.



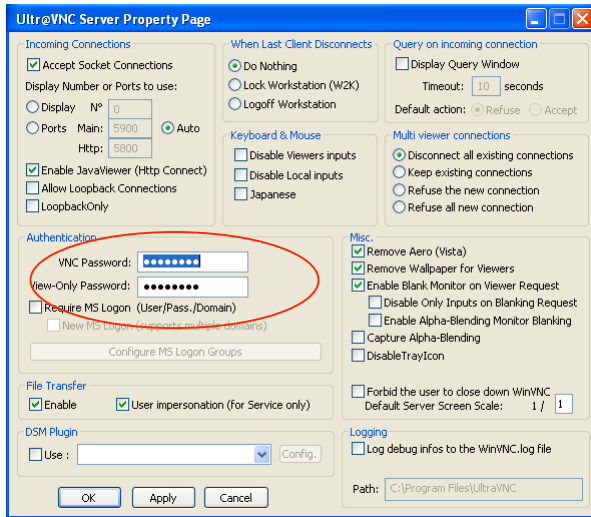
Tick the box, and click next if your GFM CPU is connected to Internet, otherwise leave box empty and click Next.



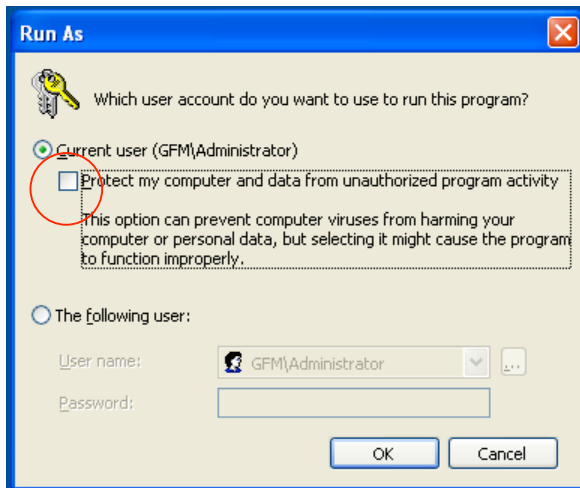
Tick all boxes and click Next.



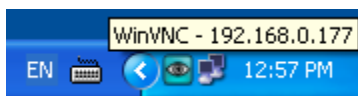
Right click the VNC icon in the system tray and click Admin Properties.



Create your password and click OK.



Make sure the box is not ticked and click OK.

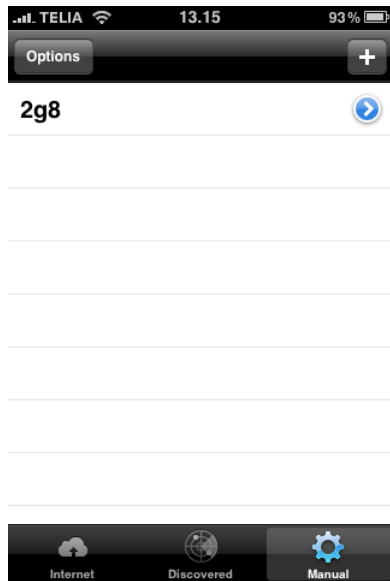


Now the VNC is configured and running. To view the IP of the VNC server, just put your cursor on the VNC icon. You need this IP to configure the viewer in your IDevice.



From your iDevice's AppStore, search for VNC, and choose iTeleport:Jaadu VNC and install it.





Once installed, start the iTeleport and touch the + icon.



Fill out the fields with appropriate data and Save Server.

Now tap Connect.

You now have the entire GFM system in the palm of your hand and can use the standard iDevice controls like pinching and so on to zoom and navigate using the tip of your finger.

Specially when doing pullchecks, this can be very useful.

